



The Crestmark

Business Bay

The Crestmark

GROUND FLOOR AMENITIES PLAN

- 1 DROP-OFF AREA
- 2 LOBBY ENTRANCE
- 3 LOBBY LOUNGE
- 4 LOBBY RECEPTION
- 5 LIBRARY AREA
- 6 HUB DESK
- 7 LIFT LOBBY
- 8 LIFT ENTRANCE
- 9 KIDTROPOLLIS WORLD
- 10 SERVICE LIFT
- 11 FURNITURE STORAGE
- 12 MOVE-IN TRUCK ZONE
- 13 BICYCLE PARKING WITH WASH AREA
- 14 VISITOR PARKING
- 15 LEDGE LOUNGER DECK
- 16 ACCESS TO CANAL BOARDWALK
- 17 VEHICLE ENTRANCE
- 18 VEHICLE EXIT



- 9.1 DINER CAFE
- 9.2 HAIR SALON
- 9.3 SUPERMARKET
- 9.4 CAR SHOP
- 9.5 GAS STATION
- 9.6 KIDS WASHROOM



The Crestmark

4TH FLOOR AMENITIES PLAN

- 1 LEISURE AND LOUNGE POOL
- 2 INFINITY POOL AREA
- 3 CABANAS
- 4 BAJA SHELF
- 5 KIDS POOL
- 6 POOL SUN LOUNGERS AREA
- 7 ACCESS TO POOL DECK & COURTYARD
- 8 MINI BOWLING ALLEY
- 9 ARCADE ROOM LOUNGE SEATS
- 10 ARCADE MACHINES
- 11 GAMES TABLE
- 12 SKEE BALL AREA
- 13 TV GAME ROOM
- 14 COURTYARD
- 15 KINETIC GARDEN
- 16 SECRET CLUB ROOM
- 17 BAR & KITCHENETTE
- 18 DINING AND LOUNGE AREA
- 19 CLUB ROOM TERRACE
- 20 FEMALE CHANGE, STEAM, SAUNA & SHOWER
- 21 MALE CHANGE, STEAM, SAUNA, & SHOWER
- 22 FUNCTIONAL TRAINING ZONE
- 23 TREADWALL
- 24 FITNESS STUDIO
- 25 LIFT LOBBY
- 26 BARBEQUE AREA
- 27 OUTDOOR YOGA AREA
- 28 OUTDOOR KIDS PLAY AREA
- 29 INDOOR YOGA AREA
- 30 ZEN ROOM
- 31 ACCESS TO WELLNESS STUDIO



3RD FLOOR WELLNESS STUDIO



The Views

Unwind in the comfort of your balcony, an outside extension of your living space. Bask in natural light and the tranquility that comes with beautiful views over the canal. The large area provided forms a perfect setting for sitting and watching the sunset over the water, or for entertaining guests against the backdrop of Dubai's iconic skyline.

The epitome of serenity amidst the pulsing energy of urban life, each outdoor balcony unit is the ultimate retreat for those who live between this duality.



Living and dining

Functionally designed to maximise views and flexibility, the living, dining and kitchen spaces merge around an open space within the apartment layouts.

Exceptional meets liveable in the spaces for gathering, giving you endless reasons to celebrate in style at home.



Rituals

Sophistication lies in the design of the bathroom spaces, finished with generous storage cabinets, warm porcelain flooring, and ribbed tiles that provide texture to the feature wall.

Enclosed with glass partitions framed with brush metal trims, the modern showers allow you to indulge in a spa-like ritual with the hand and rain shower heads. Stay stylishly organised for all your daily products with sintered stone shower shelving and stone countertops with mounted sinks that provide both practicality and aesthetic appeal.

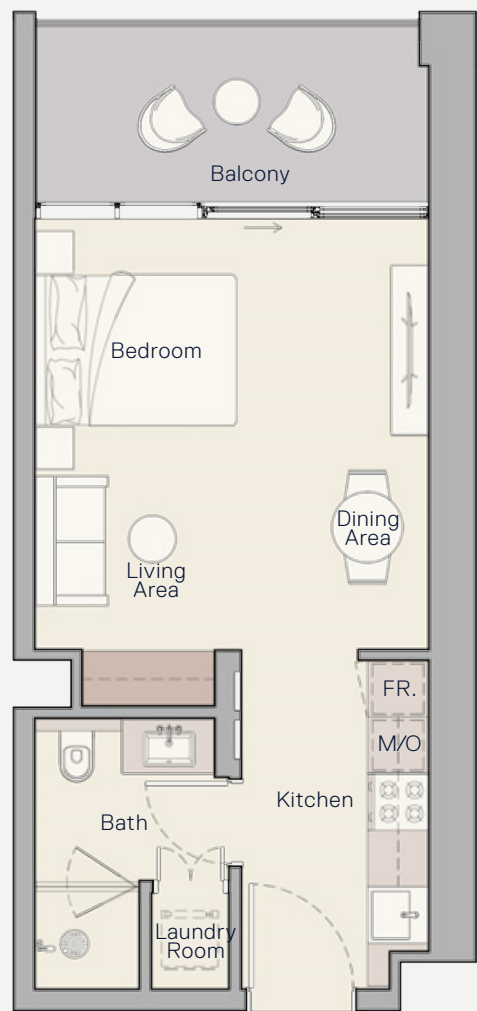


Studio apartment

Internal Living Area
400.85 Sq. Ft

Outdoor Living Area
95.91 Sq. Ft

Total Living Area
496.75 Sq. Ft



1-bedroom apartment

TYPE A

Internal Living Area
662.63 Sq. Ft

Outdoor Living Area
84.39 Sq. Ft

Total Living Area
747.02 Sq. Ft



1-bedroom apartment



TYPE B

Internal Living Area
833.99 Sq. Ft

Outdoor Living Area
187.51 Sq. Ft

Total Living Area
1021.50 Sq. Ft



1-bedroom apartment

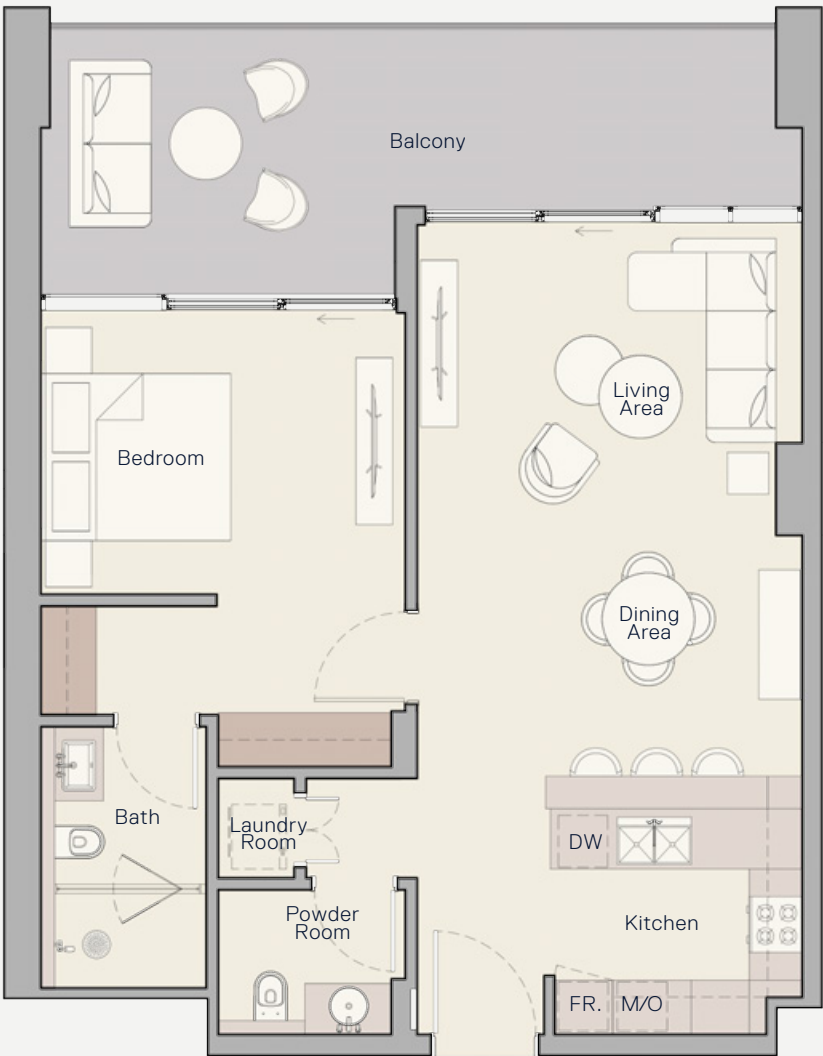


TYPE C

Internal Living Area
767.04 Sq. Ft

Outdoor Living Area
227.98 Sq. Ft

Total Living Area
995.02 Sq. Ft



1-bedroom apartment



TYPE D

Internal Living Area
874.24 Sq. Ft

Outdoor Living Area
175.67 Sq. Ft

Total Living Area
1049.91 Sq. Ft



1-bedroom apartment



TYPE E

Internal Living Area
662.84 Sq. Ft

Outdoor Living Area
111.84 Sq. Ft

Total Living Area
774.68 Sq. Ft



1-bedroom apartment



TYPE F

Internal Living Area
737.97 Sq. Ft

Outdoor Living Area
120.02 Sq. Ft

Total Living Area
857.99 Sq. Ft



2-bedroom apartment



TYPE A

Internal Living Area
1096.20 Sq. Ft

Outdoor Living Area
278.14 Sq. Ft

Total Living Area
1374.34 Sq. Ft



2-bedroom apartment



TYPE B

Internal Living Area
1076.18 Sq. Ft

Outdoor Living Area
162.86 Sq. Ft

Total Living Area
1239.03 Sq. Ft



2-bedroom apartment



TYPE C

Internal Living Area
947.12 Sq. Ft

Outdoor Living Area
115.71 Sq. Ft

Total Living Area
1062.83 Sq. Ft



2-bedroom apartment

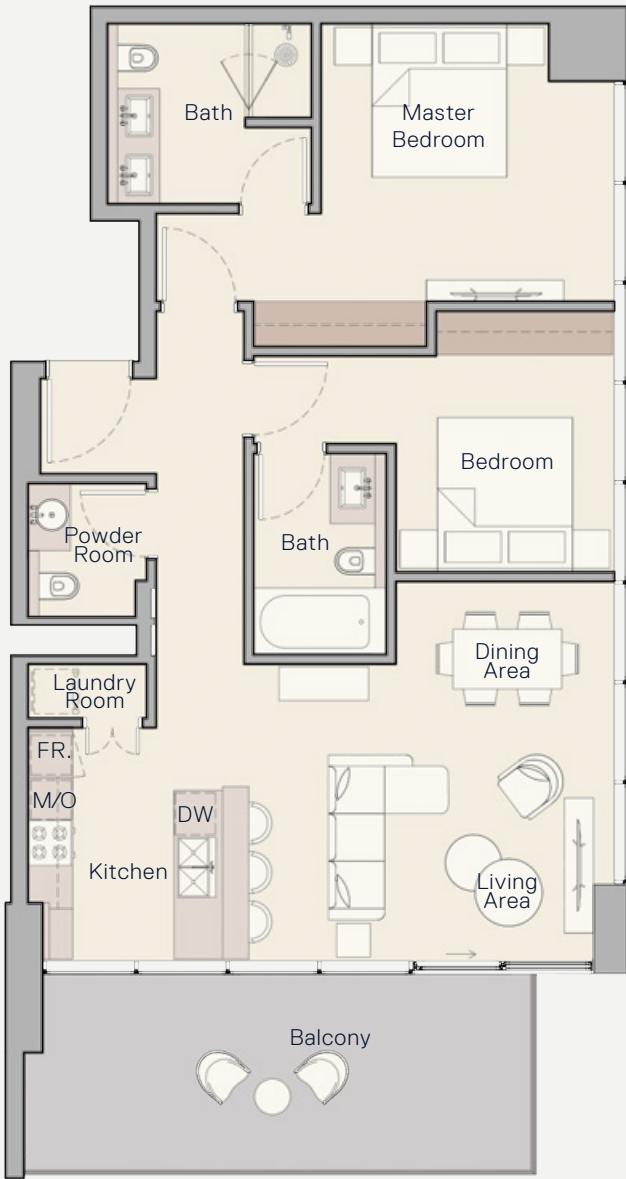


TYPE D

Internal Living Area
1021.93 Sq. Ft

Outdoor Living Area
198.49 Sq. Ft

Total Living Area
1220.41 Sq. Ft



2-bedroom apartment



TYPE E

Internal Living Area
1067.03 Sq. Ft

Outdoor Living Area
177.71 Sq. Ft

Total Living Area
1244.74 Sq. Ft



2-bedroom apartment



TYPE F

Internal Living Area
1168.21 Sq. Ft

Outdoor Living Area
145.42 Sq. Ft

Total Living Area
1313.63 Sq. Ft



2-bedroom apartment



TYPE G

Internal Living Area
1184.78 Sq. Ft

Outdoor Living Area
232.93 Sq. Ft

Total Living Area
1417.71 Sq. Ft



2-bedroom apartment



TYPE G

Internal Living Area
1191.67 Sq. Ft

Outdoor Living Area
218.62 Sq. Ft

Total Living Area
1410.29 Sq. Ft



3-bedroom apartment



TYPE A

Internal Living Area
1408.78 Sq. Ft

Outdoor Living Area
214.96 Sq. Ft

Total Living Area
1623.74 Sq. Ft



3-bedroom apartment



TYPE B

Internal Living Area
1415.35 Sq. Ft

Outdoor Living Area
305.70 Sq. Ft

Total Living Area
1721.04 Sq. Ft



3-bedroom apartment



TYPE C

Internal Living Area
2225.12 Sq. Ft

Outdoor Living Area
935.49 Sq. Ft

Total Living Area
3160.61 Sq. Ft



3-bedroom apartment



TYPE D

Internal Living Area
2579.25 Sq. Ft

Outdoor Living Area
933.98 Sq. Ft

Total Living Area
3513.23 Sq. Ft



4-bedroom apartment



TYPE A

Internal Living Area
2597.76 Sq. Ft

Outdoor Living Area
466.18 Sq. Ft

Total Living Area
3063.95 Sq. Ft



Penthouse apartment



TYPE A

Internal Living Area
3839.81 Sq. Ft

Outdoor Living Area
1607.91 Sq. Ft

Total Living Area
5447.72 Sq. Ft



Penthouse apartment



TYPE B

Internal Living Area
3988.57 Sq. Ft

Outdoor Living Area
2116.29 Sq. Ft

Total Living Area
6104.86 Sq. Ft



Penthouse apartment



TYPE C

Internal Living Area
2254.07 Sq. Ft

Outdoor Living Area
488.90 Sq. Ft

Total Living Area
2742.97 Sq. Ft



The renderings and visualizations contained in this brochure are provided for illustrative and marketing purposes. While the information provided is believed to be accurate and reliable at the time of printing, only the information contained in the final Sales and Purchase Agreement will have any legal effect.

